

HWASAN



1911

www.hwasantoy.com

1 DESCRIPTION



- 01 Front sight
- 02 Muzzle
- 03 Slide catch lever
- 04 Magazine catch
- 05 Slide
- 06 Safety

1 DESCRIPTION



- 07 Rear sight
- 08 Hammer
- 09 Grip safety
- 10 Magazine
- 11 Trigger

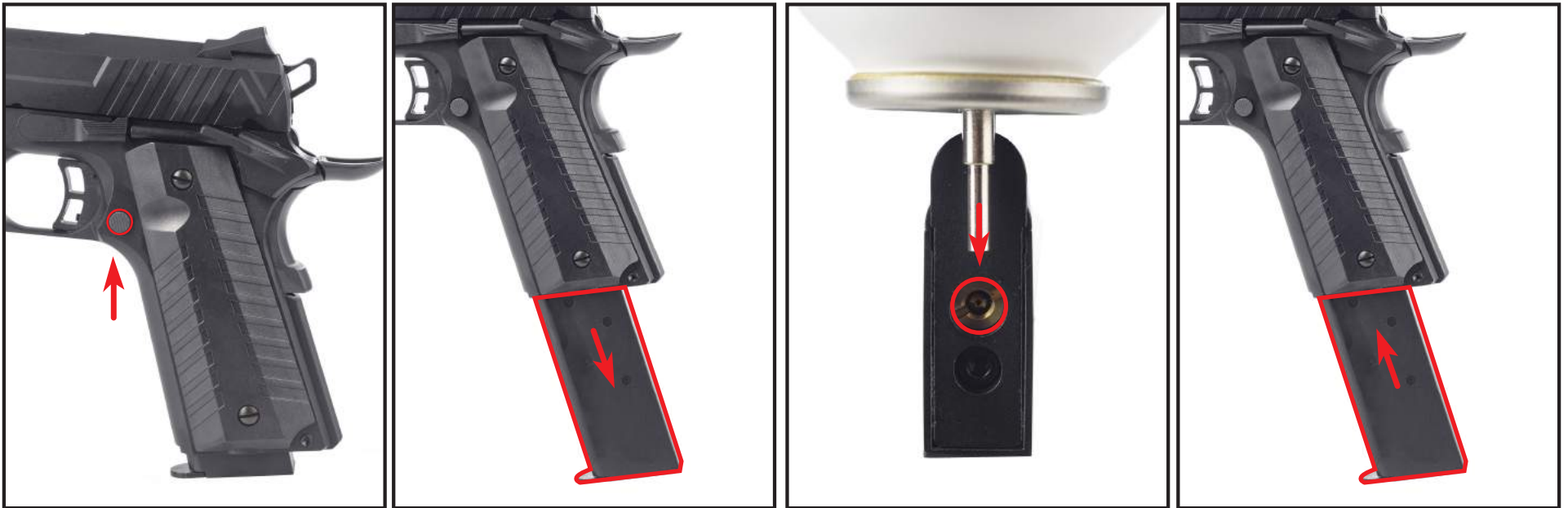
2 SAFETY CAUTION

- Read the instruction manual before using the product.
- Always wear eye protective gear when using the product.
- Please put away from your fingers on the trigger, except when ready to shoot a target.
- Please also always observe the legal regulations effective in your country for the use of arms.



3 CHARGING OF GAS

- Press the magazine catch and remove the magazine.
- Turn the magazine upside down with gas valve facing upwards.
- The magazine is fully charged when you observe a discharge of gas from the port.



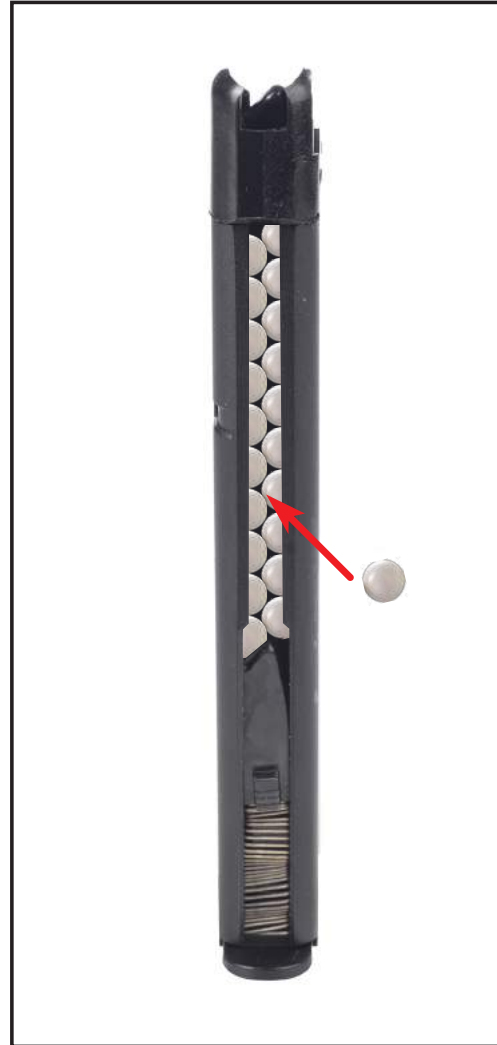
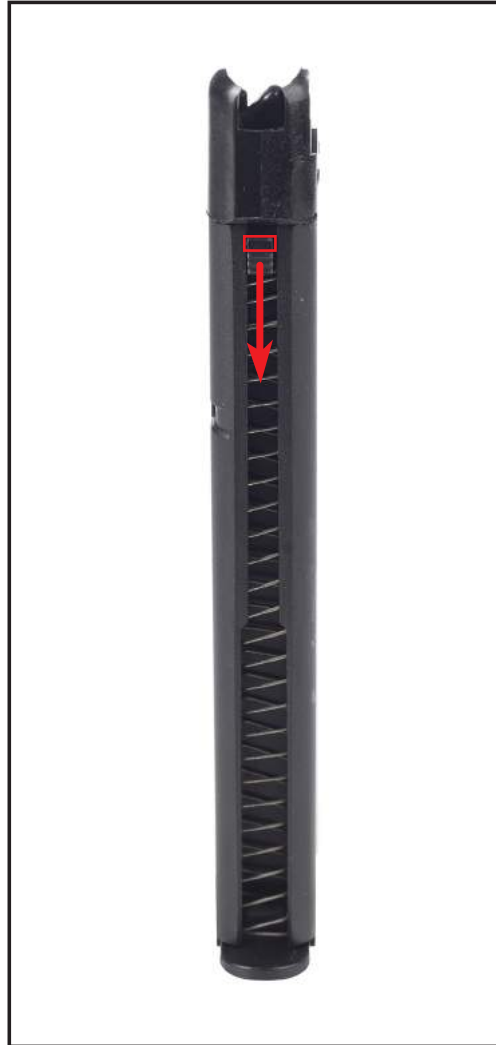
4 DISCHARGING OF GAS

- Removing of Gas Hold the the magazine at its bottom.
- Press the valve Residual gas may now be discharged.

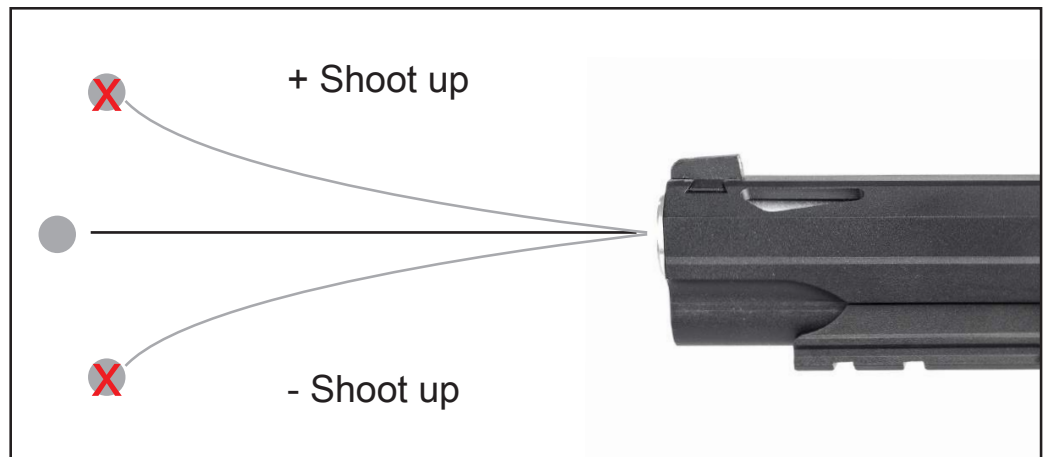
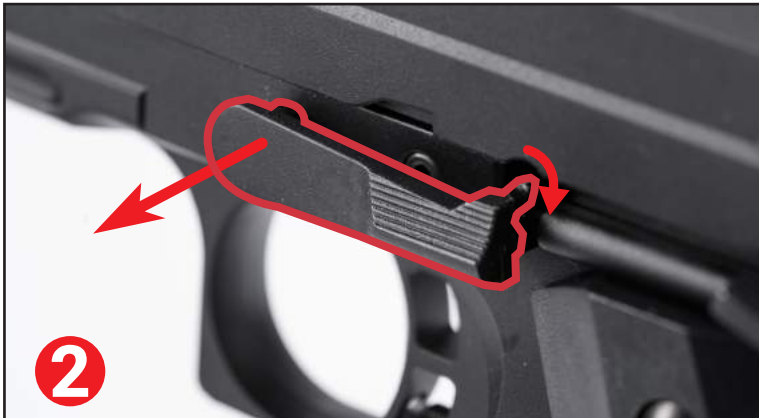



5 LOADING THE MAGAZINE

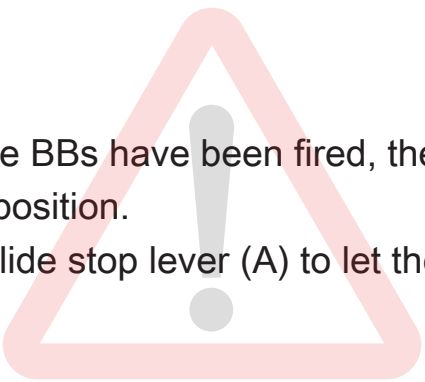
- Only use flawless BBs.
- Please do not use the BBs diameter larger than 6 mm,with edges, both halves not aligned, used, soiled.



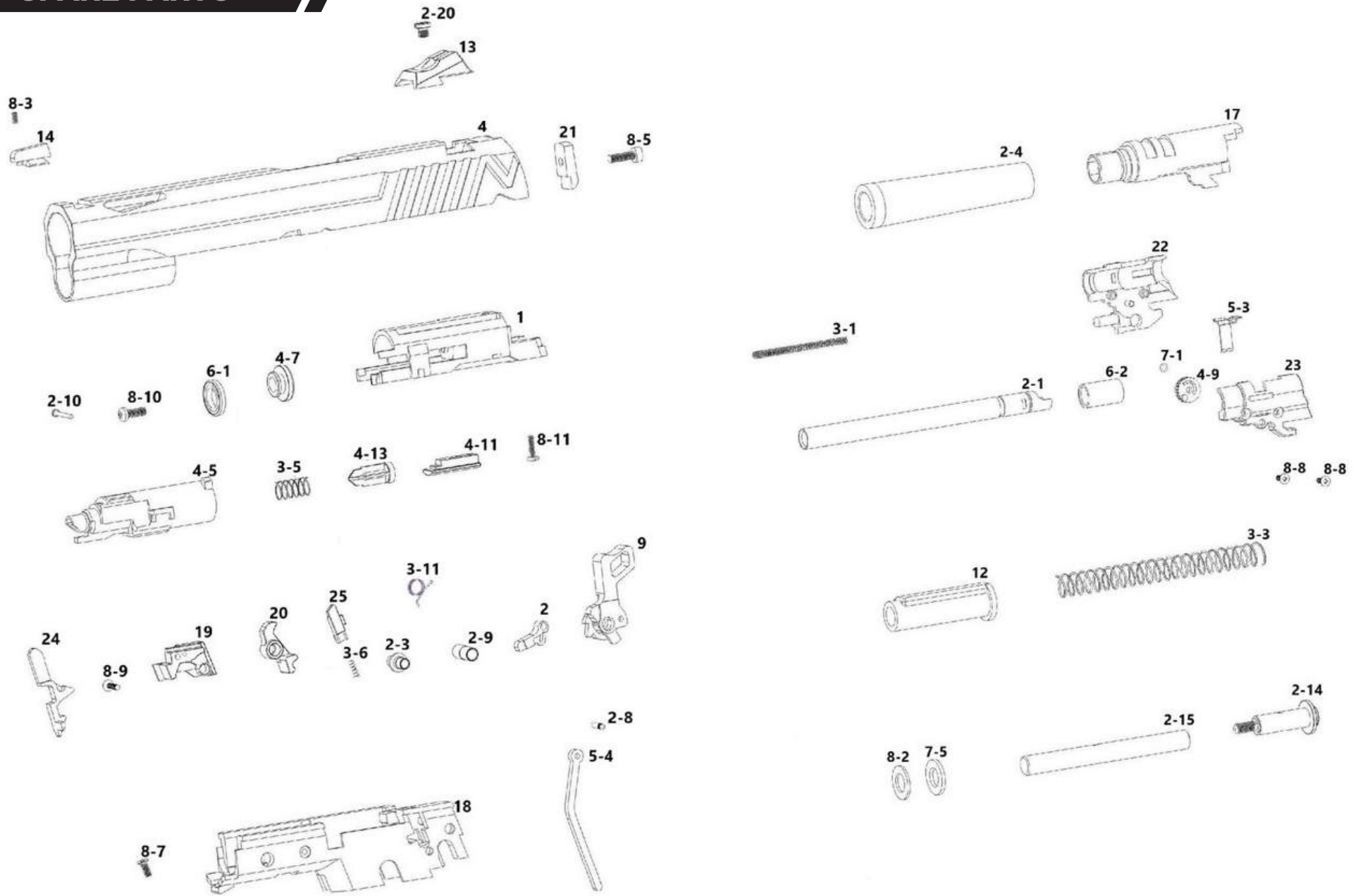
6 ADJUSTABLE SHOOT UP



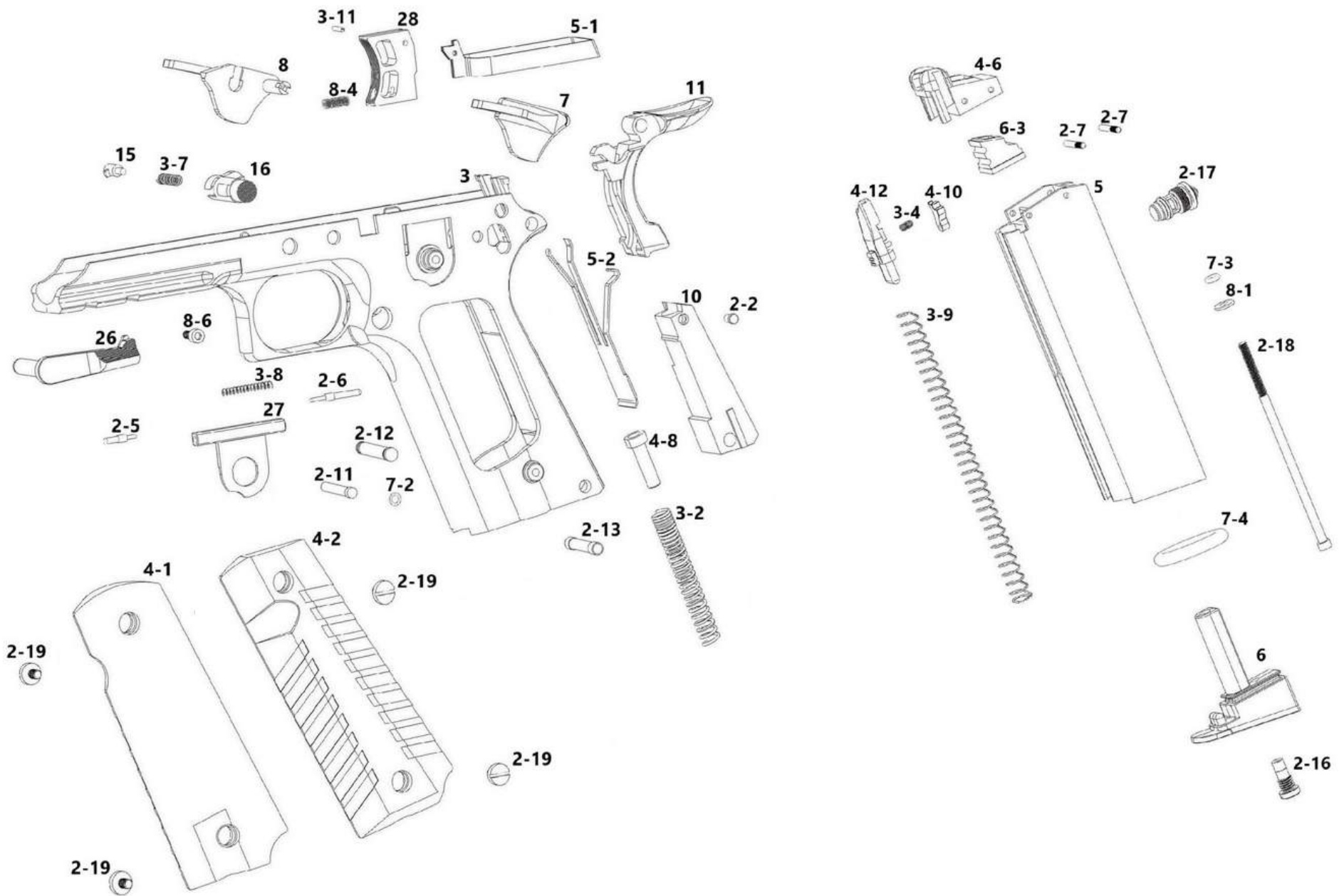
 When all the BBs have been fired, the slide will stay in the rear position. Press the slide stop lever (A) to let the slide jump forward.



8 SPARE PARTS



8 SPARE PARTS



8 SPARE PARTS

No.	Name of Part	Price(NT)	Price(USD)
1	Cylinder	400	13.3
2	Steel Knocker	100	3.3
3	Frame	2200	73.3
4	Slide	1600	53.3
5	Magazine Case	400	13.3
6	Magazine Bottom	200	6.7
7	Safety (Right)	140	4.7
8	Safety (Left)	140	4.7
9	Hammer	150	5.0
10	Hammer Spring Housing	240	8.0
11	Grip Safety	240	8.0
12	Recoil Plug	200	6.7
13	Rear Sight	120	4.0
14	Front Sight	60	2.0
15	Magazine Catch Lock	30	1.0
16	Magazine Catch	120	4.0
17	Outter Barrel Chamber	300	10.0
18	Front Chasis	300	10.0
19	Chassis Cover	80	2.7
20	Sear	60	2.0
21	Firing Pin Stop	100	3.3
22	Chamber Cover (Right)	140	4.7
23	Chamber Cover (Left)	140	4.7
24	Disconnecter	80	2.7
25	Steel Knocker Lock	100	3.3
26	Slide Stop	200	6.7
27	Plunger Guide	120	4.0
28	Trigger	120	4.0

No.	Name of Part	Price(NT)	Price(USD)
2-1	Inner Barrel	180	6.0
2-2	Plunger Stopper	40	1.3
2-3	Sear Sleeve	40	1.3
2-4	Outter Barrel	300	10.0
2-5	Slide Stop Plunger	50	1.7
2-6	Safety Plunger	50	1.7
2-7	BB Lip Pin	10	0.3
2-8	Hammer Strut Pin	10	0.3
2-9	Hammer Sleeve	50	1.7
2-10	Cylinder Valve Stopper	20	0.7
2-11	Sear Pin	40	1.3
2-12	Hammer Pin	40	1.3
2-13	Housing Pin	50	1.7
2-14	Recoil Spring Guide A	150	5.0
2-15	Recoil Spring Guide B	150	5.0
2-16	Filling Valve	200	6.7
2-17	EX-Valve(Gas)	200	6.7
2-18	Magazine Base Screw	80	2.7
2-19	Grip Screw	30	1.0
2-20	Rear Sight Screw	50	1.7
3-1	Cylinder Return Spring	20	0.7
3-2	Hammer Spring	70	2.3
3-3	Recoil Spring	60	2.0
3-4	Follower Lever Spring	15	0.5
3-5	Cylinder Valve Spring	20	0.7
3-6	Knocker Lock Spring	20	0.7
3-7	Magazine Catch Spring	20	0.7
3-8	Plunger Spring	20	0.7
3-9	Follower Spring	80	2.7
3-10	Knocker Spring	30	1.0
3-11	Trigger Pin	10	0.3

No.	Name of Part	Price(NT)	Price(USD)
4-1	Grip (Right)	80	2.7
4-2	Grip (Left)	80	2.7
4-5	Cylinder	150	5.0
4-6	BB Lip	60	2.0
4-7	Ring Head	40	1.3
4-8	Hammer Spring Plunger	30	1.0
4-9	Adjust Dial	20	0.7
4-10	Follower Lever	20	0.7
4-11	Piston Part	30	1.0
4-12	Follower	30	1.0
4-13	Cylinder Valve	20	0.7
5-1	Trigger Bar	120	4.0
5-2	Sear Spring	100	3.3
5-3	Adjust Lever	50	1.7
5-4	Hammer Strut	50	1.7
6-1	Ring	80	2.7
6-2	Rubber Chamber	100	3.3
6-3	Magazine Gasket	100	3.3
7-1	O-Ring	10	0.3
7-2	Hammer Pin O-ring	10	0.3
7-3	O-Ring	10	0.3
7-4	O-Ring	50	1.7
7-5	Recoil Spring Pad	50	1.7
8-1	Washer	10	0.3
8-2	Washer	10	0.3
8-3	Front Sight Screw	20	0.7
8-4	Trigger Screw	20	0.7
8-5	Firing Pin Stop Screw	20	0.7
8-6	Frame Screw	20	0.7
8-7	Front Chasis Screw	20	0.7
8-8	Chamber Cover Screw	20	0.7
8-9	Chassis Cover Screw	20	0.7
8-10	Ring Head Screw	20	0.7
8-11	Piston Part Screw	20	0.7